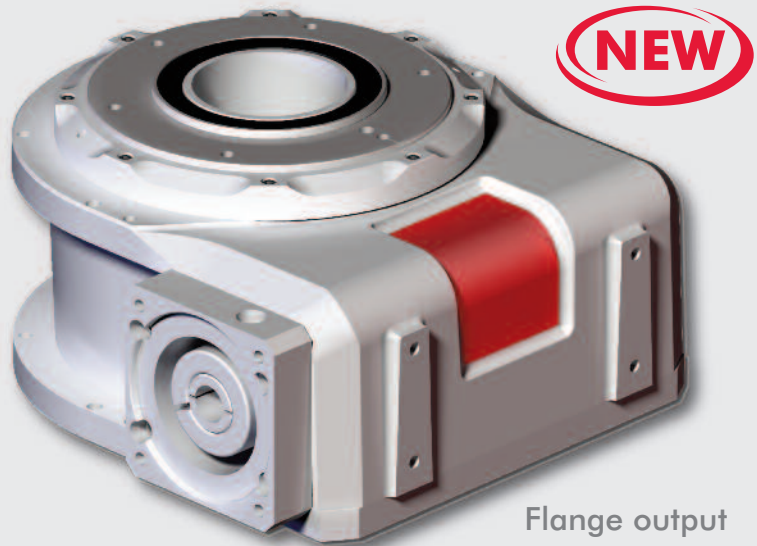


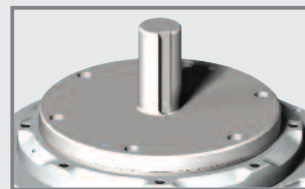
# SMARTER INDEXING

The **CAMCO RSD Rotary Servo Drive** is a zero-backlash, cam-actuated drive compatible with industry-standard servo motors for precise control, efficiency and flexibility.

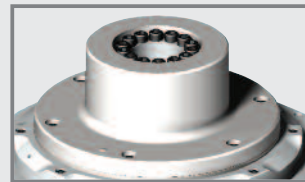
- Designed to accept a variety of servo motors
- Preloaded system
  - Zero backlash
  - High accuracy
  - Smooth motion
  - Quiet operation
  - High speed
- Indexing flexibility
  - Run different parts on the same indexer
  - Variable indexing: reversing, sorting, vary distance with each index
- 4:1 to 18:1 ratios in a single stage
- Features
  - Universal mounting
  - Maintenance-free operation
  - Large output bearing for greater overturning moment capacity
  - Large thru-hole for accessory lines (electric, pneumatic, etc.)
  - IP-65 rating
  - Class 100 rated with Med-Redi preparation



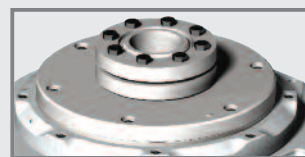
Flange output



Shaft output



Internal shrink disk output



Shrink disk output

