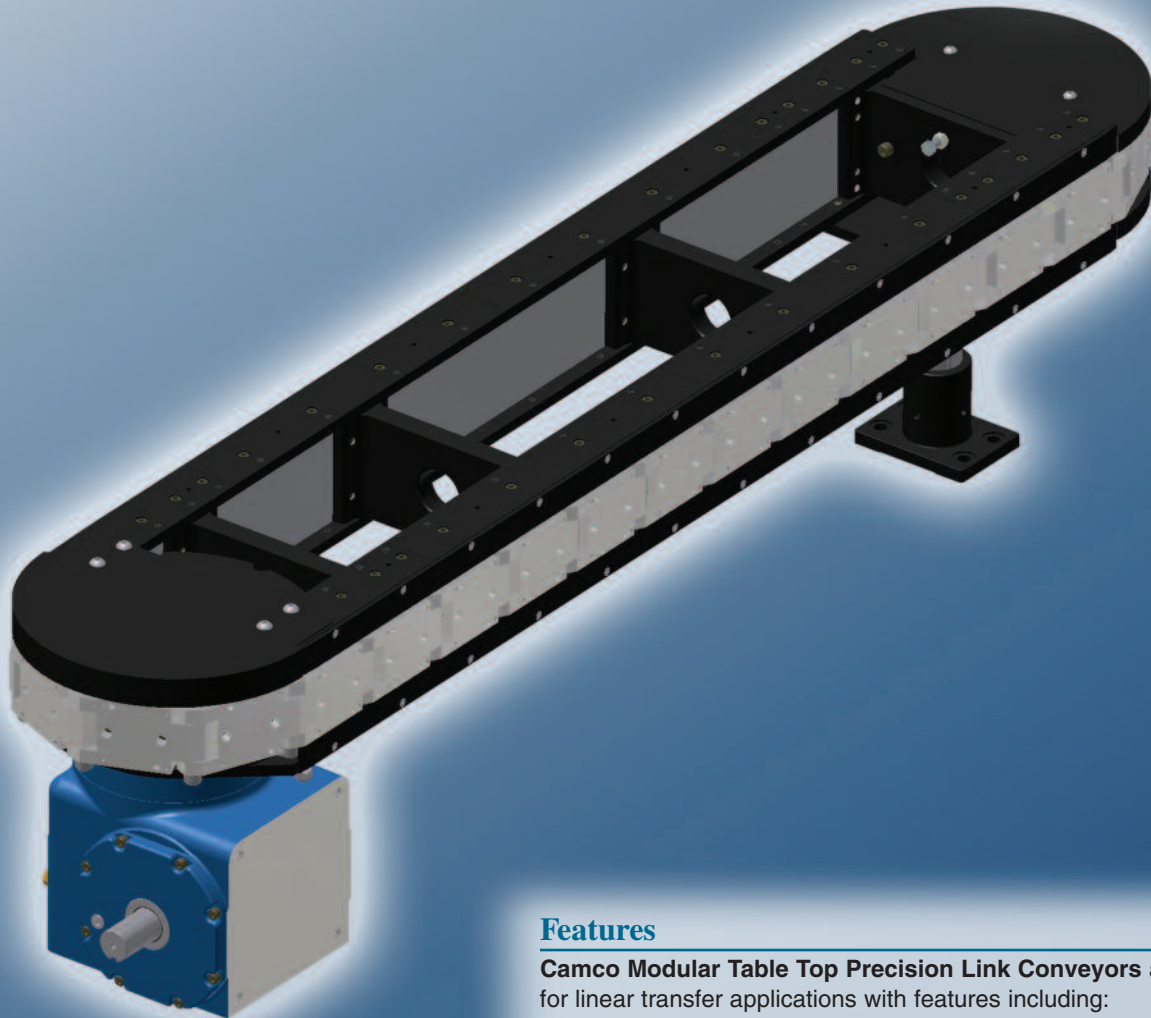


# Modular Table-Top Conveyors



A DOVER COMPANY

**Automation**  
**Robohand FERGUSON**  
**CAMCO**

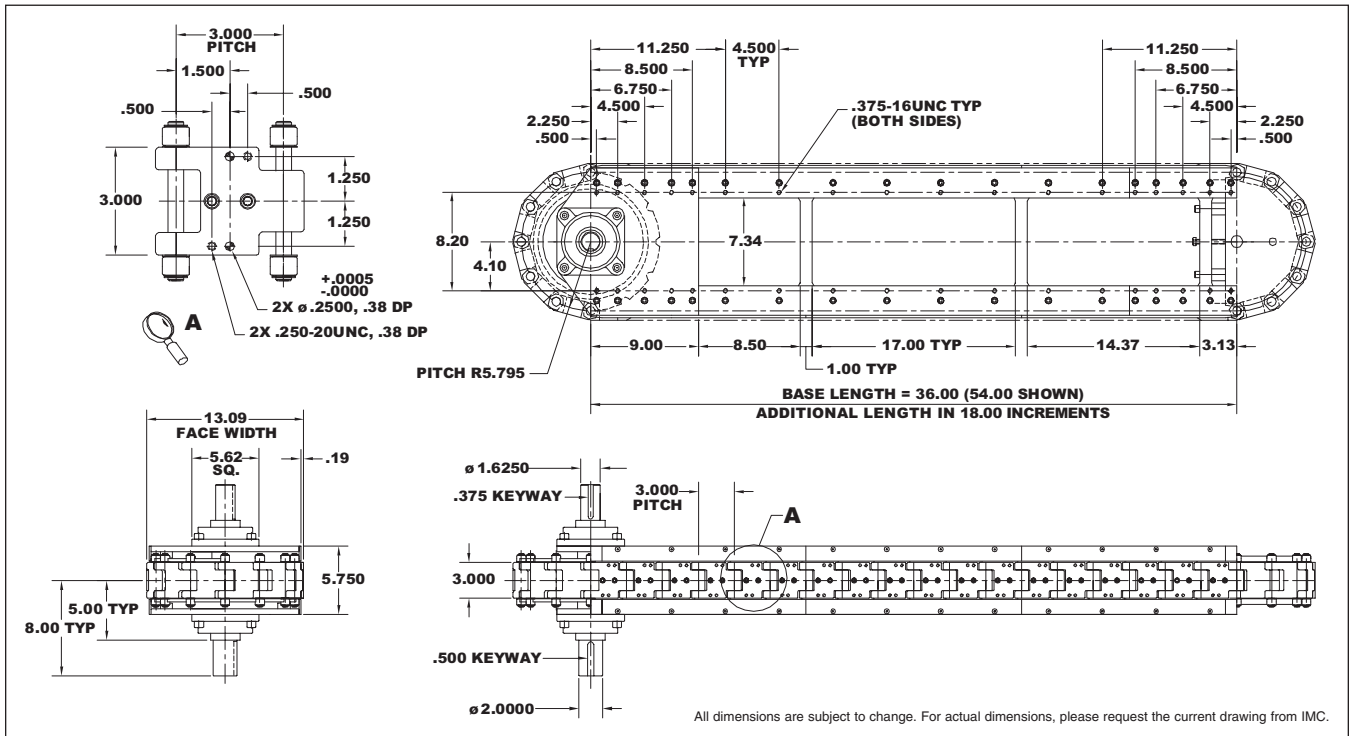


## Features

**Camco Modular Table Top Precision Link Conveyors** are ideal for linear transfer applications with features including:

- ◆ **Modular frame design in fixed increment lengths facilitates quick assembly and delivery.**
- ◆ Table-Top or Base mounted
- ◆ Precision positioning of parts for assembly or manufacturing processes
- ◆ High-speed station-to-station parts transfer
- ◆ Precision links with roller bearing cam followers for smooth transfer and long life.
- ◆ Link sizes (3-inch, 4.5-inch, 6-inch) to meet most application requirements
- ◆ Open frame design for pass-through of belting, linkages, electric and air supply components.
- ◆ Optional bases, line shafts and tooling plates
- ◆ Complete with motorized index drive system including overload protection.

### 3.0 Basic Module



#### Standard Drive Package

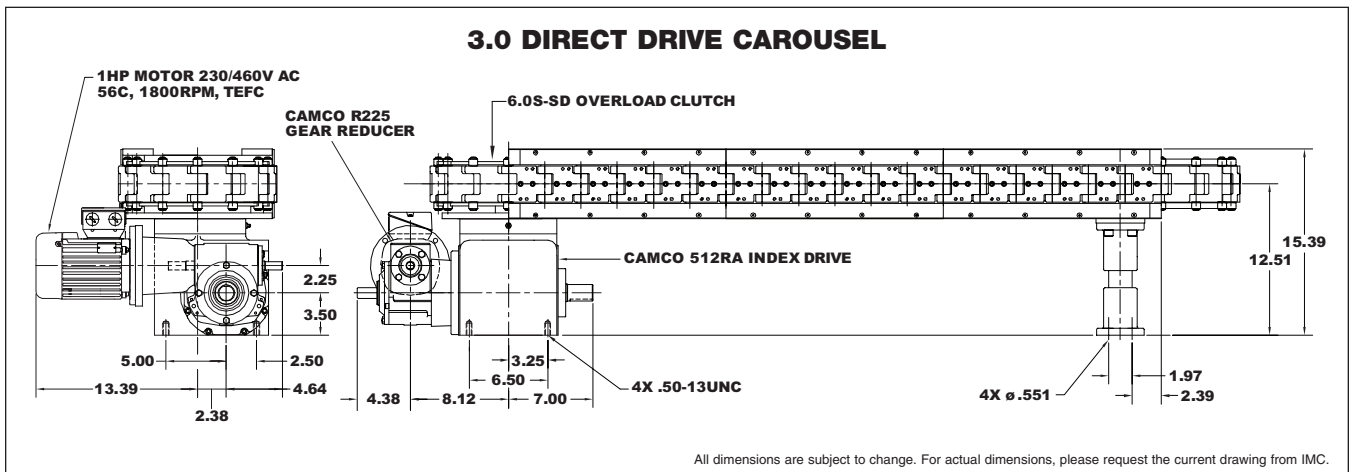
- ◆ 512RA Index Drive
- ◆ R225 Gear Reducer
- ◆ 6.0FC-SD Overload Clutch (Shaft Drive)
- ◆ 6.0S-SD Overload Clutch (Direct Drive)
- ◆ 1 hp high-cycling, performance AC Motor
- ◆ IM-pAC Motor Control

#### Heavy Duty Drive Package

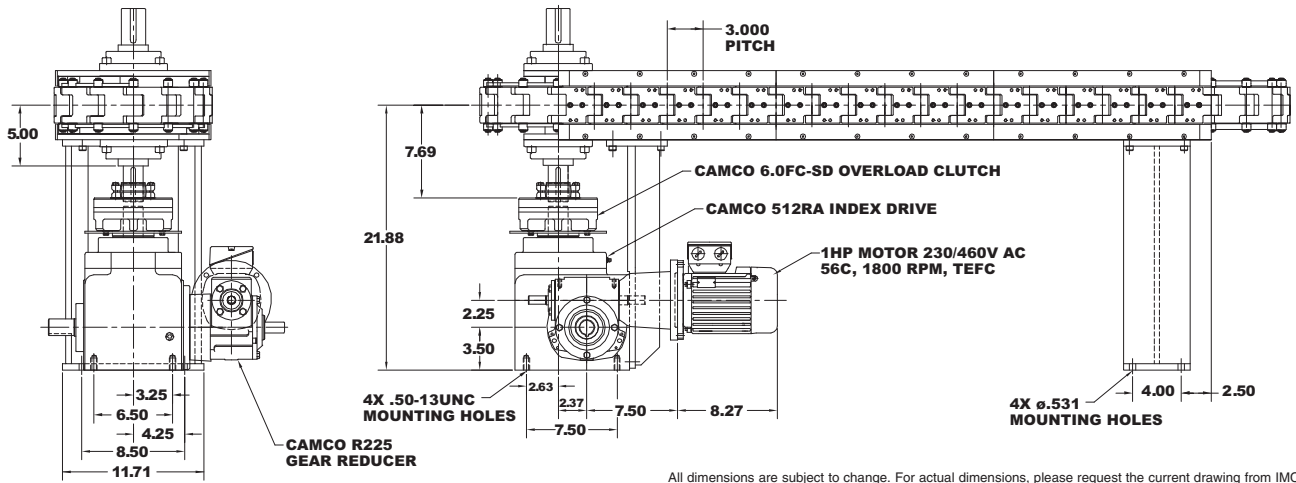
- ◆ 662RA Index Drive
- ◆ 7300C Gear Reducer
- ◆ 11FC-SD Overload Clutch (Shaft Drive)
- ◆ 6.0S-SD Overload Clutch (Direct Drive)
- ◆ 1 hp high-cycling, performance AC Motor
- ◆ IM-pAC Motor Control

Index Distance	Indexer Stops
3	12
6	6
9	4
12	3

Other Drive Packages Available

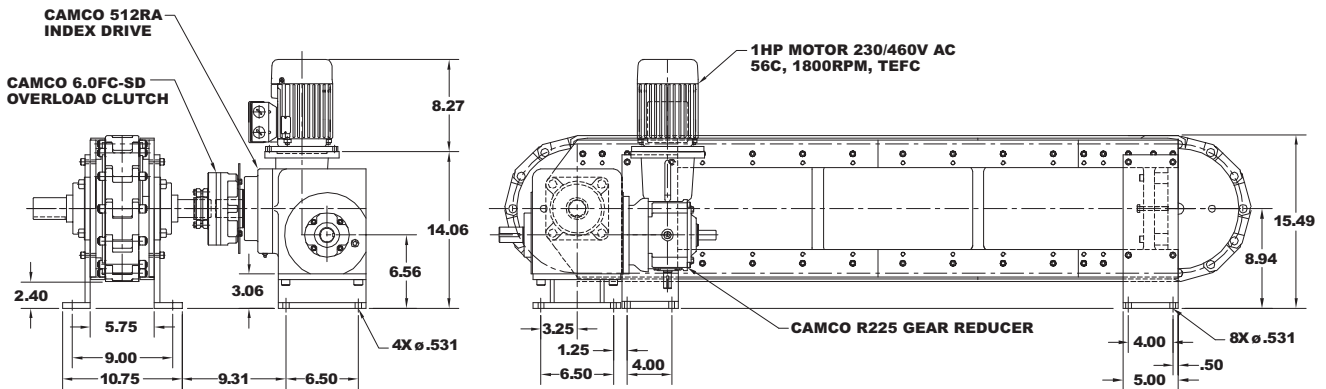


## 3.0 SHAFT DRIVE CAROUSEL



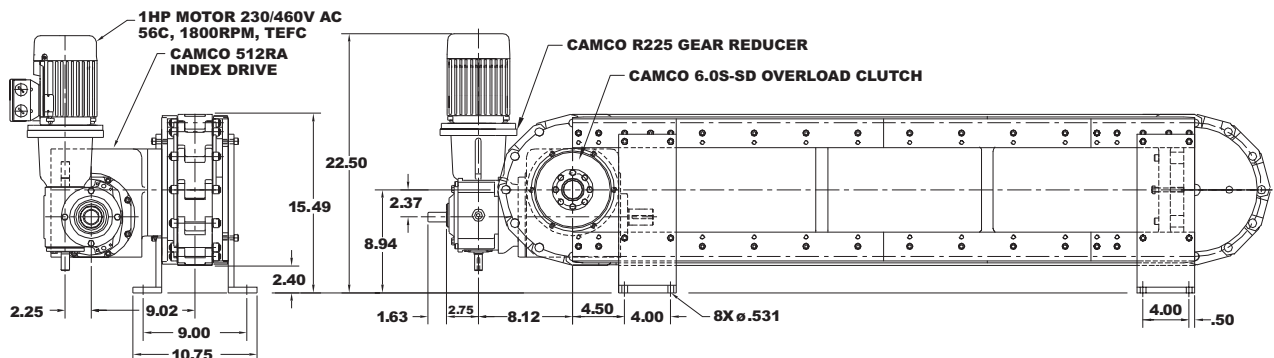
All dimensions are subject to change. For actual dimensions, please request the current drawing from IMC.

## 3.0 SHAFT DRIVE OVER/UNDER



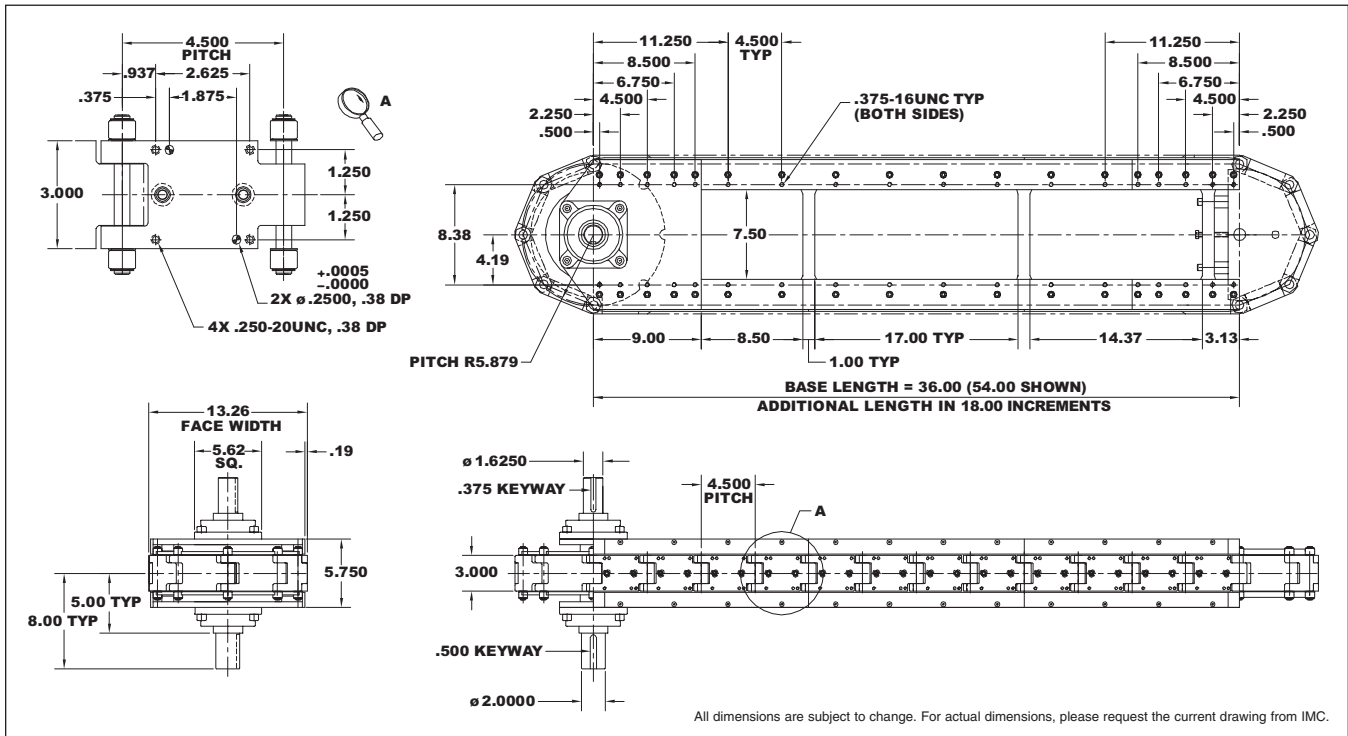
All dimensions are subject to change. For actual dimensions, please request the current drawing from IMC.

## 3.0 DIRECT DRIVE OVER/UNDER



All dimensions are subject to change. For actual dimensions, please request the current drawing from IMC.

## 4.5 Basic Module



### Standard Drive Package

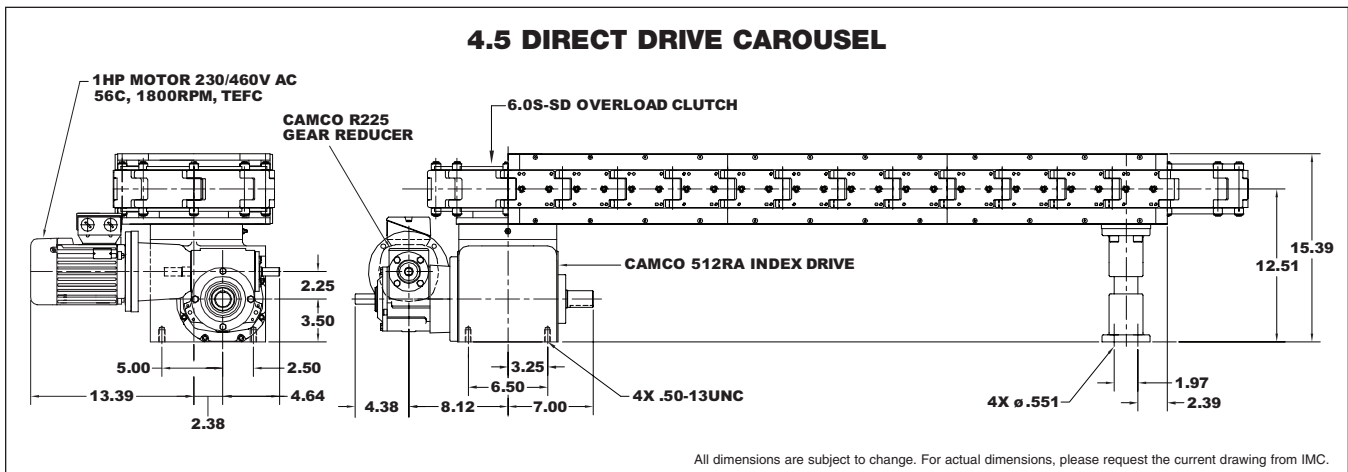
- ◆ 512RA Index Drive
- ◆ R225 Gear Reducer
- ◆ 6.0FC-SD Overload Clutch (Shaft Drive)
- ◆ 6.0S-SD Overload Clutch (Direct Drive)
- ◆ 1 hp high-cycling, performance AC Motor
- ◆ IM-pAC Motor Control

### Heavy Duty Drive Package

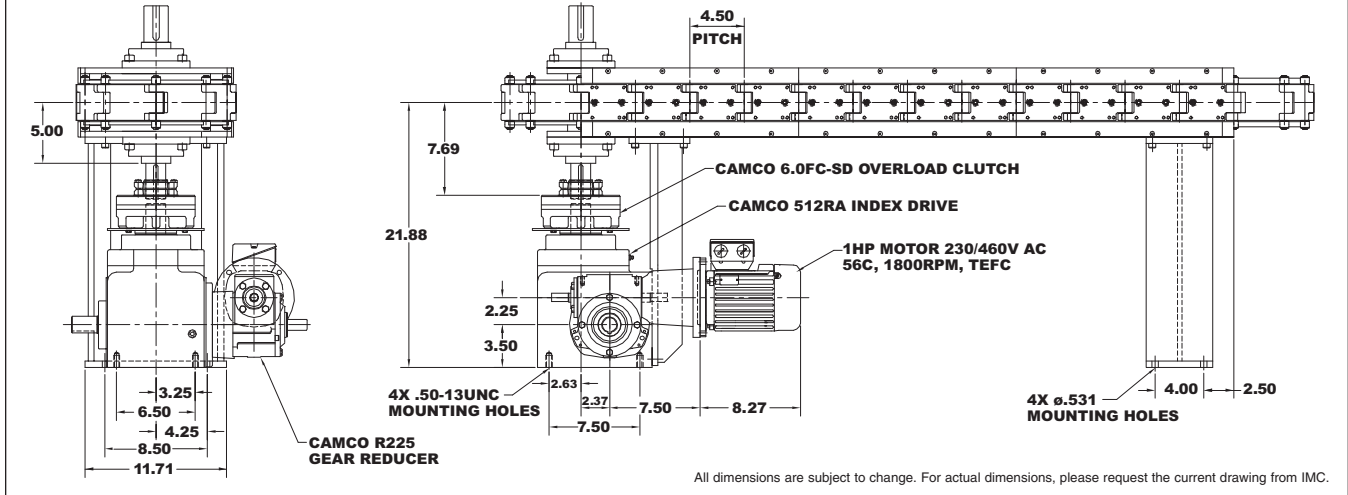
- ◆ 662RA Index Drive
- ◆ 7300C Gear Reducer
- ◆ 11FC-SD Overload Clutch (Shaft Drive)
- ◆ 6.0S-SD Overload Clutch (Direct Drive)
- ◆ 1 hp high-cycling, performance AC Motor
- ◆ IM-pAC Motor Control

Index Distance	Indexer Stops
4.5	8
9	4
18	2

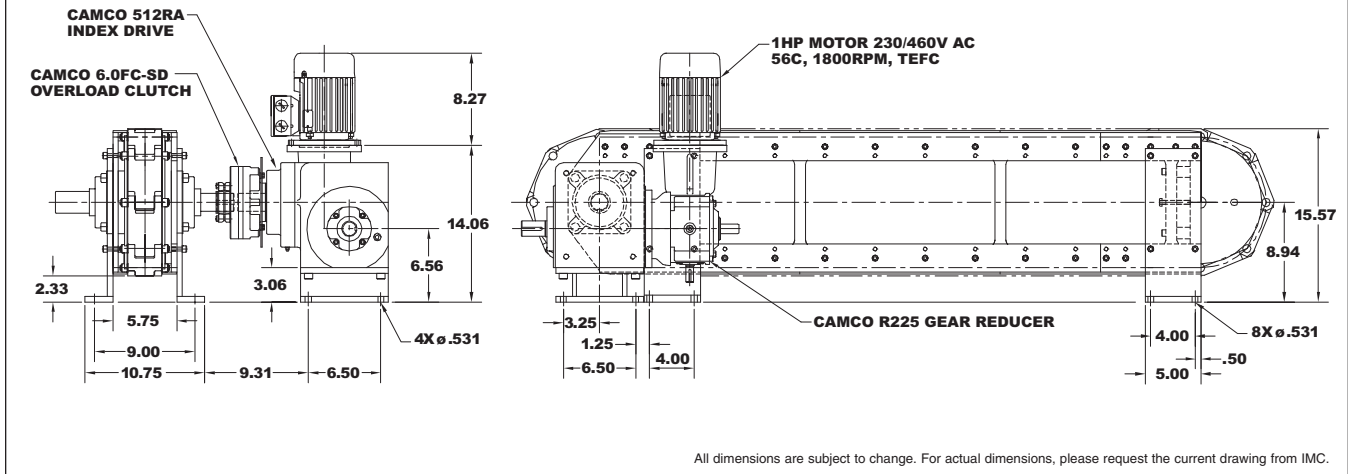
Other Drive Packages Available



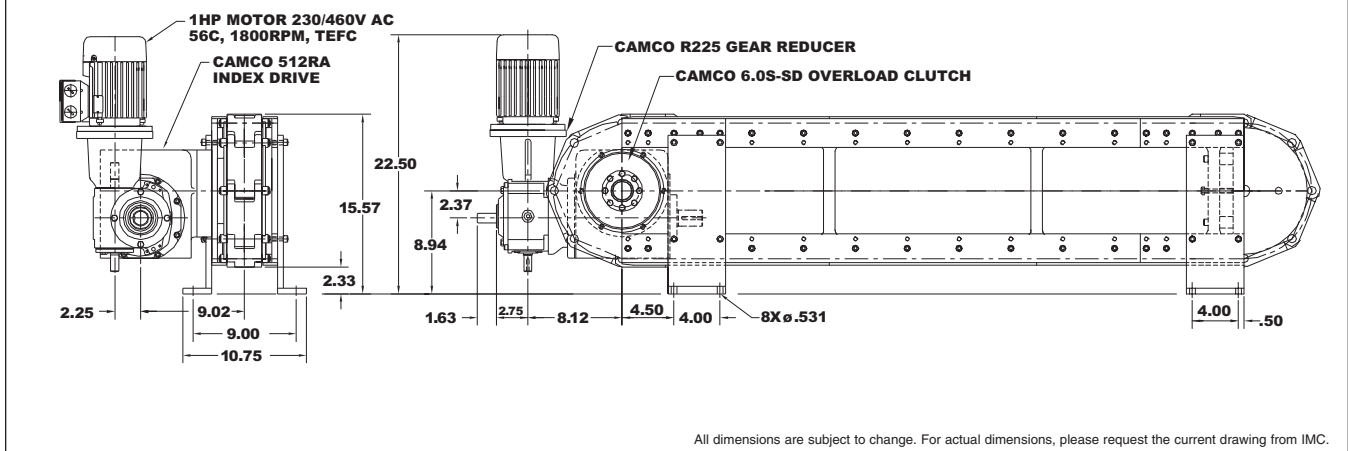
## 4.5 SHAFT DRIVE CAROUSEL



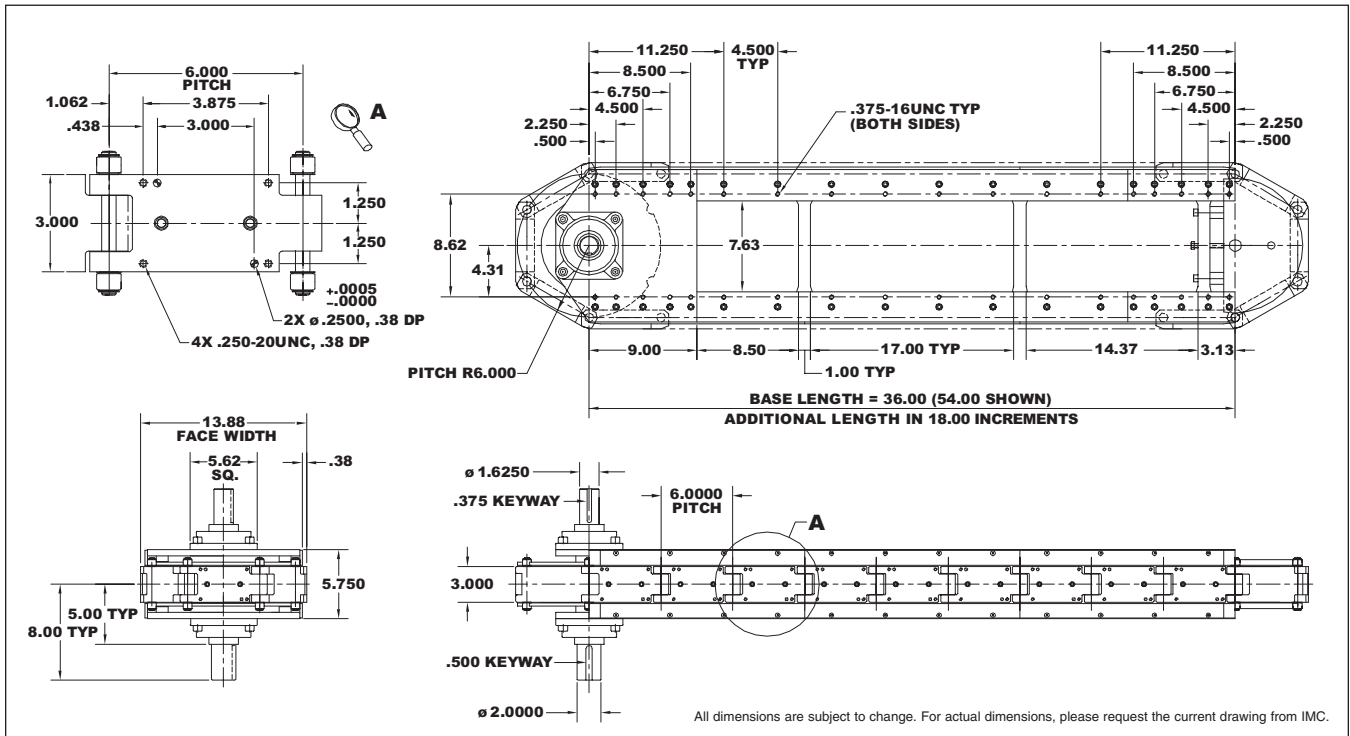
## 4.5 SHAFT DRIVE OVER/UNDER



## 4.5 DIRECT DRIVE OVER/UNDER



# 6.0 Basic Module



## Standard Drive Package

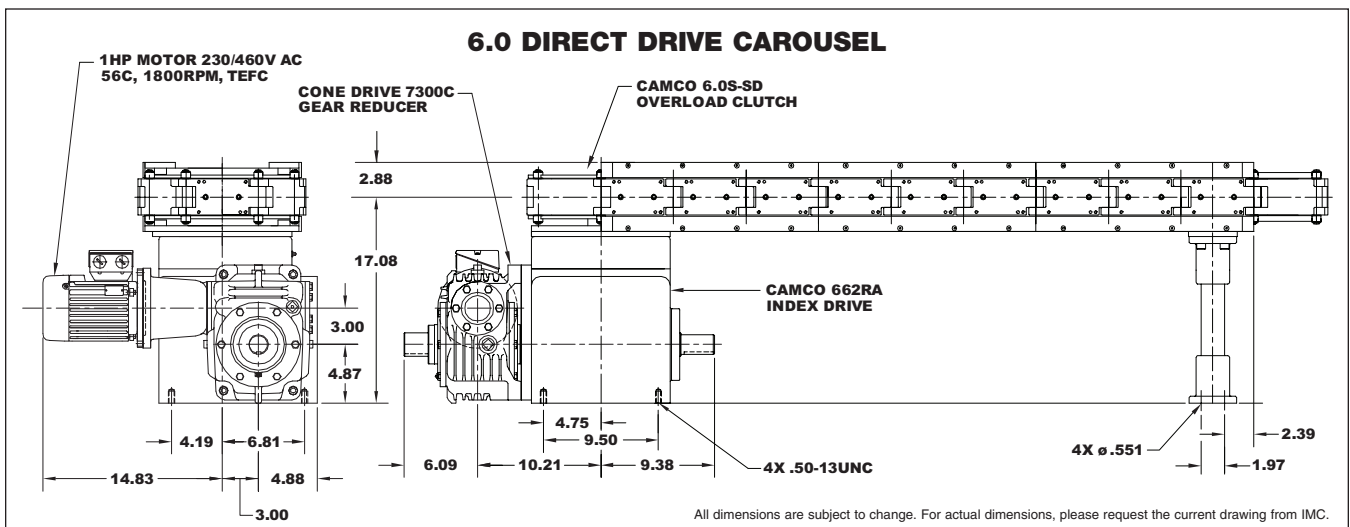
- ◆ 662RA Index Drive
- ◆ 7300C Gear Reducer
- ◆ 11FC-SD Overload Clutch (Shaft Drive)
- ◆ 6.0S-SD Overload Clutch (Direct Drive)
- ◆ 1 hp high-cycling, performance AC Motor
- ◆ IM-pAC Motor Control

## Heavy Duty Drive Package

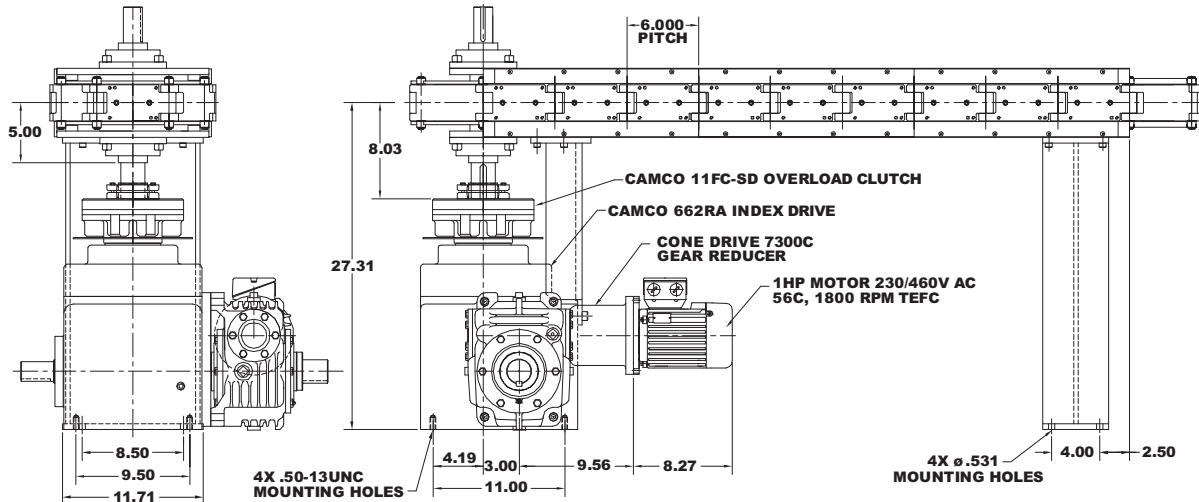
- ◆ 800RD Index Drive
- ◆ 7300C Gear Reducer
- ◆ 25FC-SD Overload Clutch
- ◆ 1 hp high-cycling, performance AC Motor
- ◆ IM-pAC Motor Control

Index Distance	Indexer Stops
6	6
12	3
18	2

Other Drive Packages Available

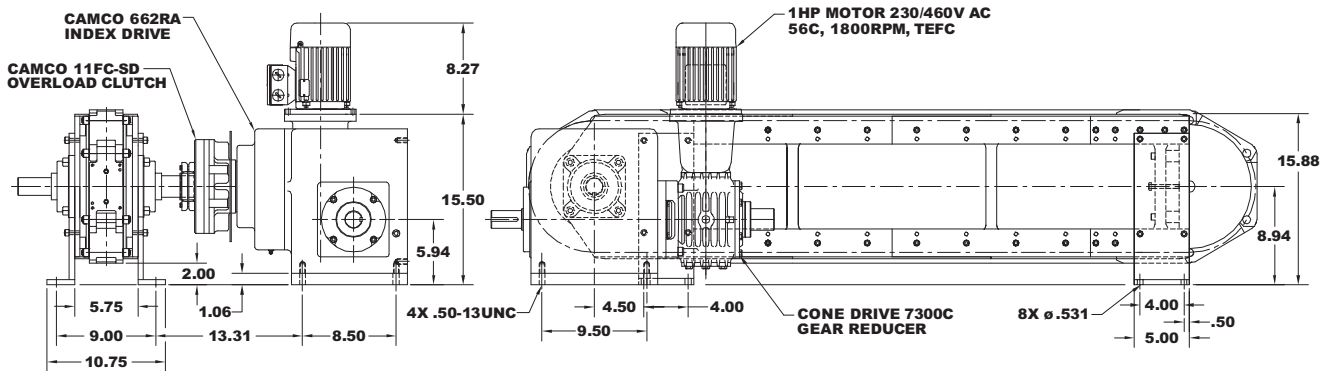


## 6.0 SHAFT DRIVE CAROUSEL



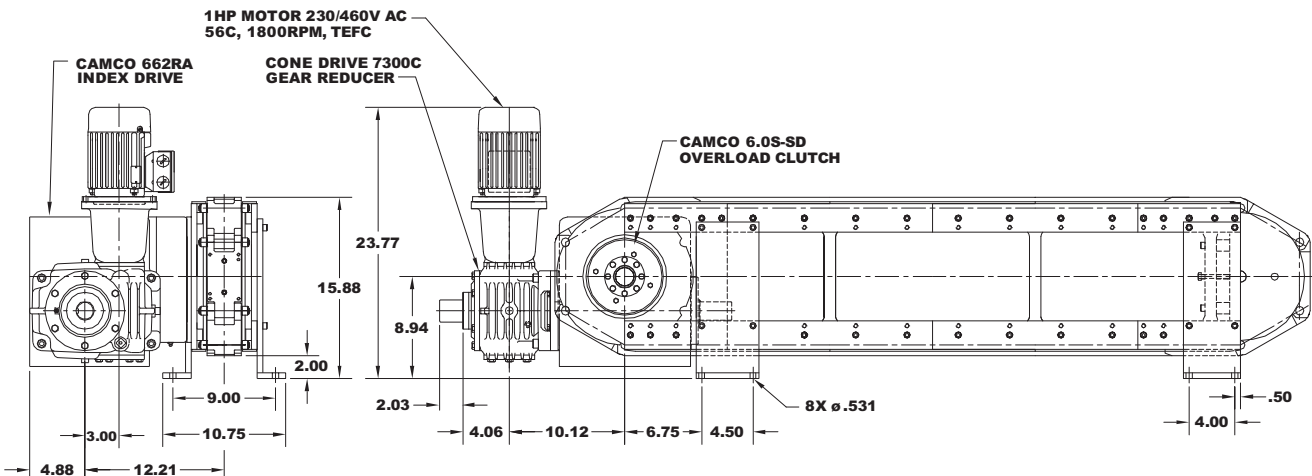
All dimensions are subject to change. For actual dimensions, please request the current drawing from IMC.

## 6.0 SHAFT DRIVE OVER/UNDER



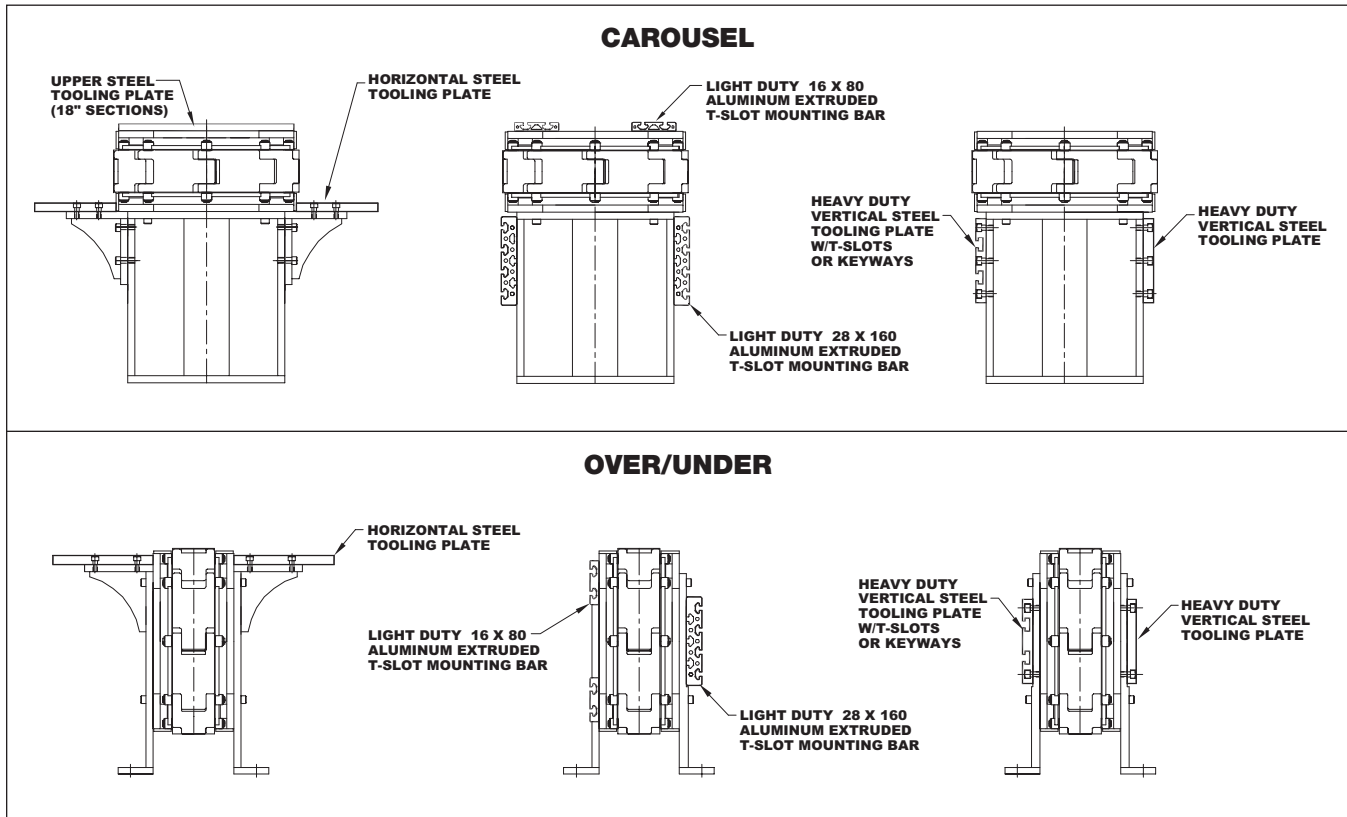
All dimensions are subject to change. For actual dimensions, please request the current drawing from IMC.

## 6.0 DIRECT DRIVE OVER/UNDER

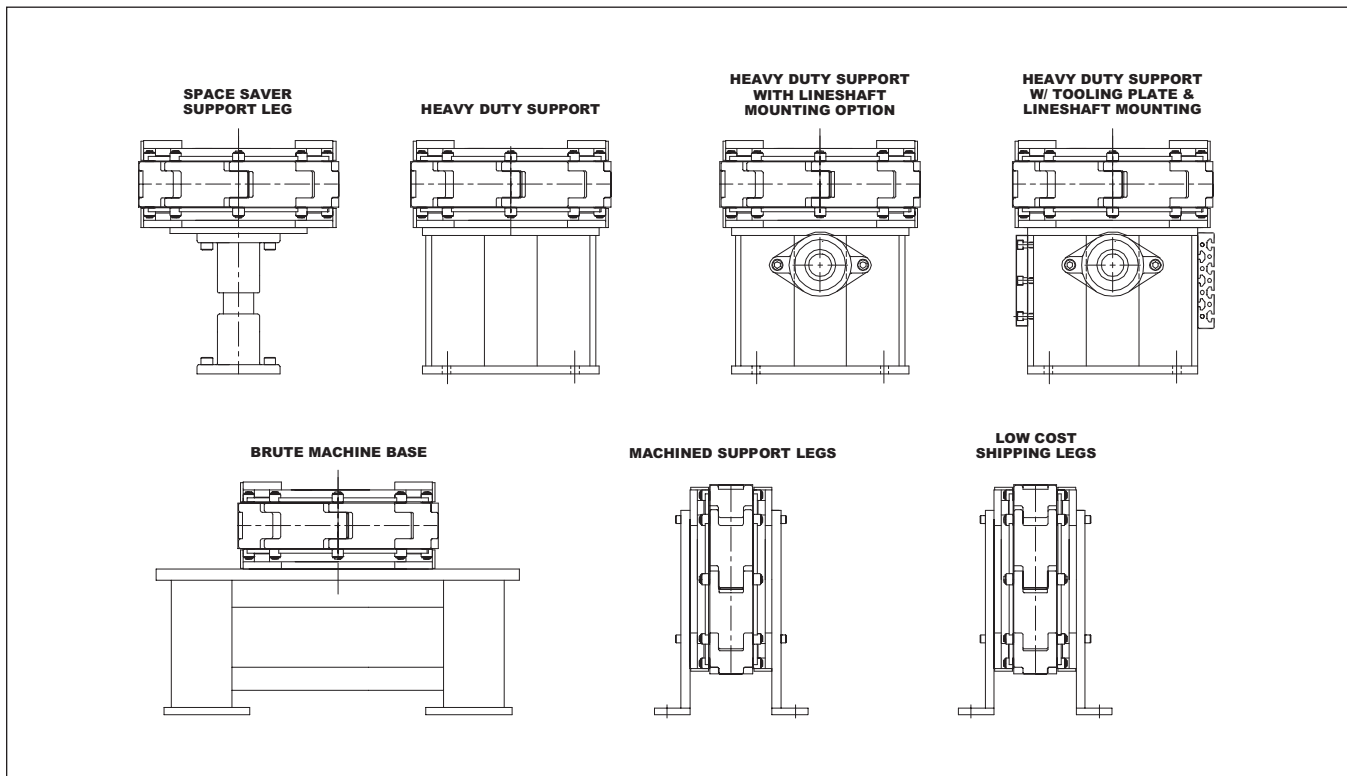


All dimensions are subject to change. For actual dimensions, please request the current drawing from IMC.

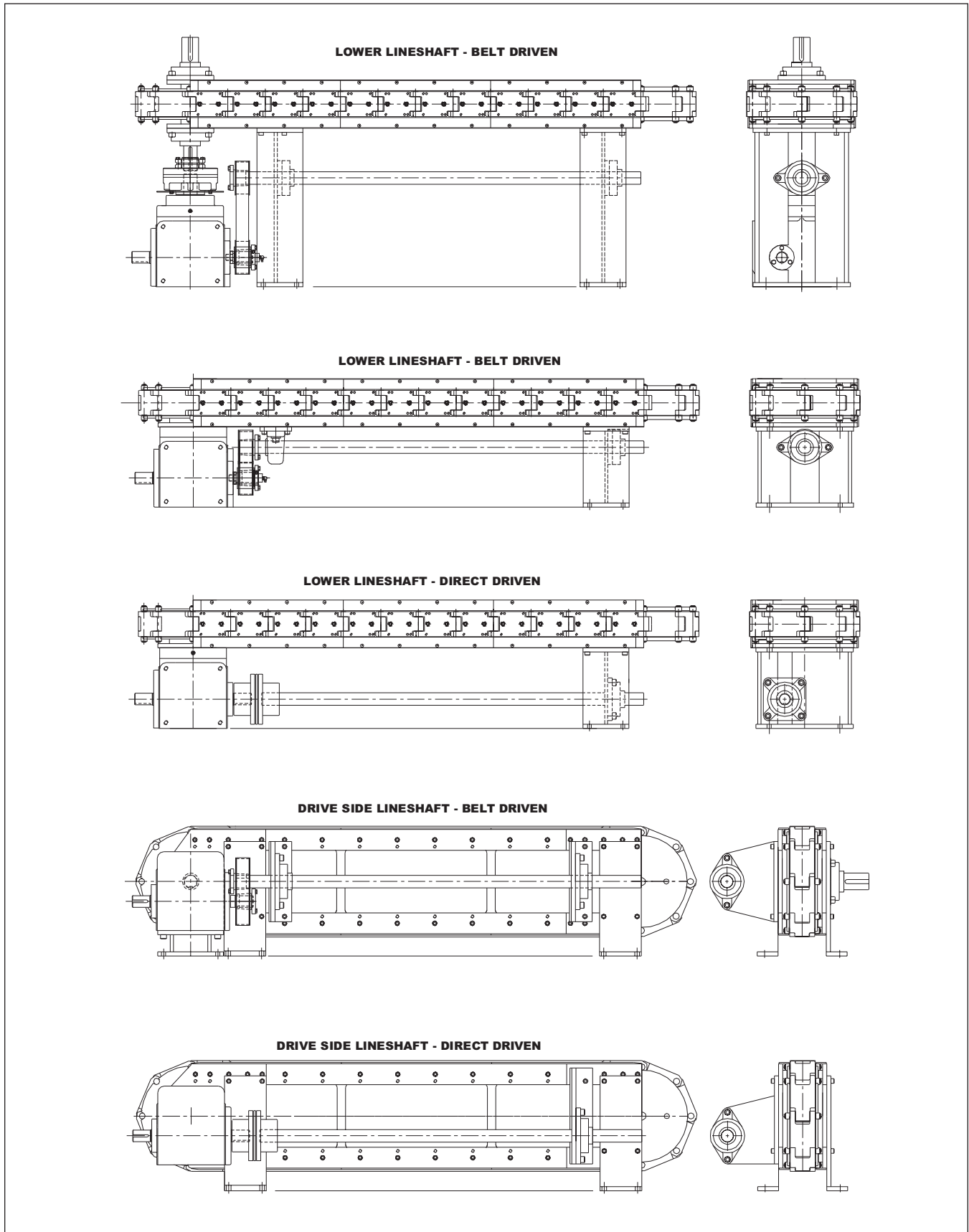
## Tooling Plate Options



## Support Leg Options



## Lineshaft Options



## Ordering Procedure

The following ordering procedure is intended as a general guideline for minimum information required when ordering a Precision Link Conveyor.

Your Camco-Ferguson Agent will help you clearly specify any alterations or options you need to meet your design requirements

### Required Conveyor Information

---

- ◆ **Link Size:** 3.0, 4.5, 6.0
- ◆ **Conveyor Type:** Carousel, Over/Under or Module Only
- ◆ **Drive Type:** Shaft or Direct
- ◆ **Length:** Standard (in 18-inch increments) or Special Center Distance
- ◆ **Height:** Standard (per catalog drawings) or Special
- ◆ **Options:** Tooling Plates, Line Shafts, Support Legs, etc.

### Required Drive Information

---

- ◆ **Drive Type:** Standard, Heavy Duty or Special
- ◆ **Index Distance:** In inches
- ◆ **Indexer Model:** Model Number or Special
- ◆ **Indexer Positions:** 1-4
- ◆ **Drive Side:** 1 or 2 (for Over/Under only)
- ◆ **Reducer Mounting Position**

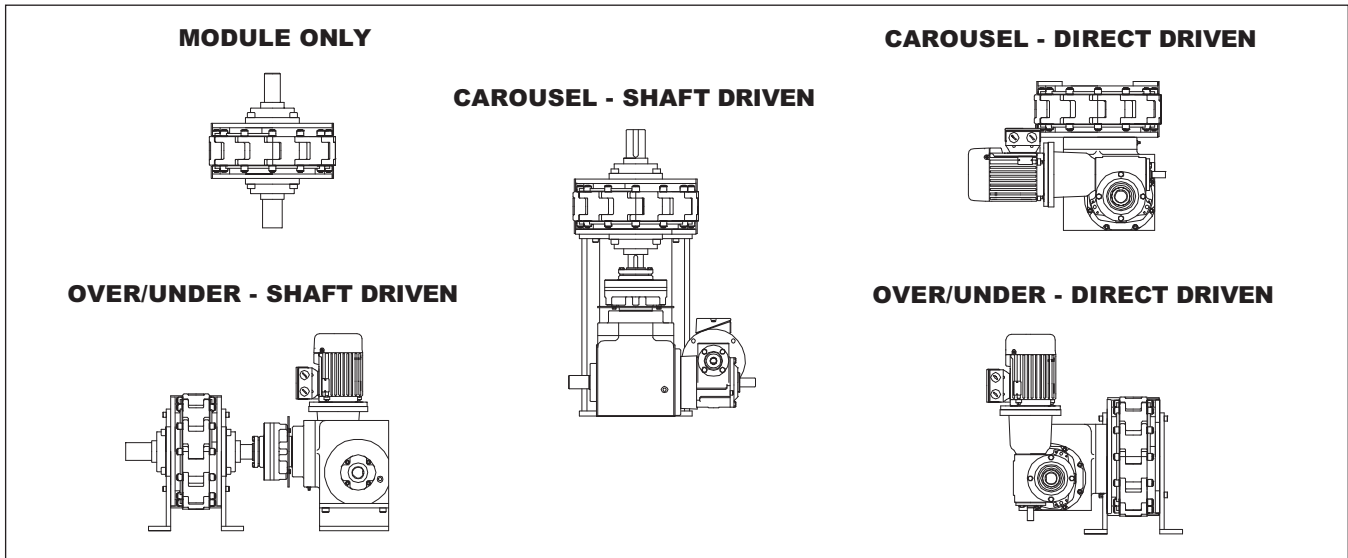
### Technical Assistance

---

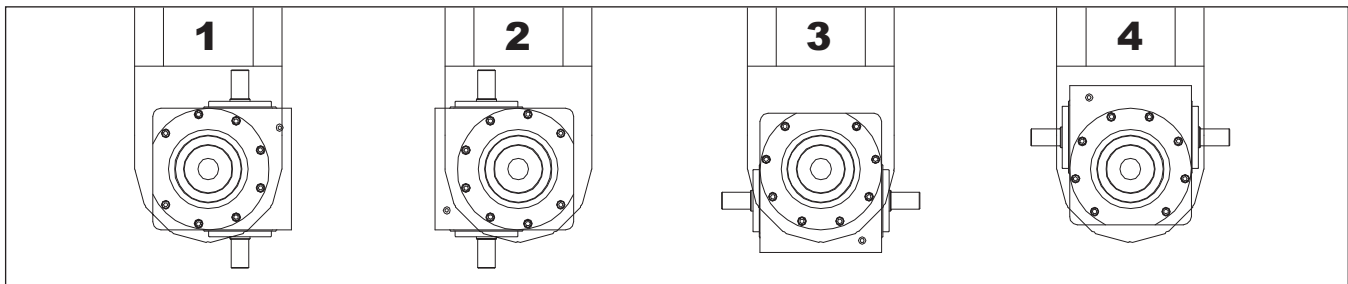
All Precision Link Conveyor applications are verified by a Camco-Ferguson sales agent using the Camco-Ferguson Sizing Program.

Your Camco-Ferguson agent is available to make all sizing calculations for you.

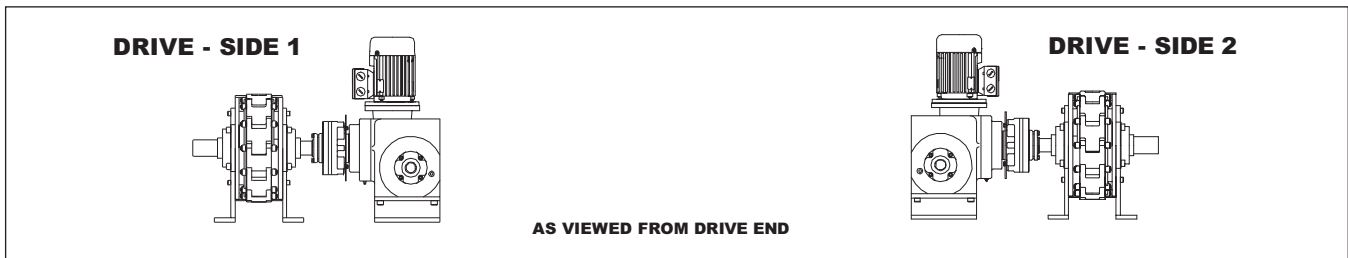
## Conveyor Type



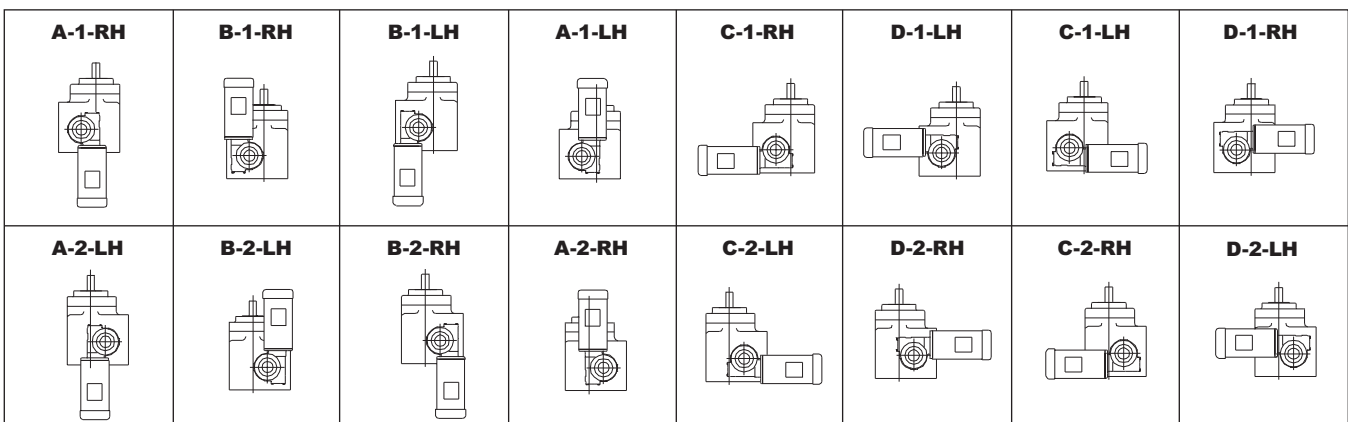
## Indexer Position



## Over/Under Drive Side



## Reducer Mounting Position



## **Camco-Ferguson Headquarters**

**Industrial Motion Control, LLC**

DE-STA-CO

Wheeling, Illinois

Tel: 847-459-5200

camco@destaco.com

www.camcoindex.com

## **DE-STA-CO Headquarters**

Auburn Hills, Michigan

Tel: 1-888-DESTACO

marketing@destaco.com

## **DE-STA-CO Europe**

Tel: +49-6171-705-0

europe@destaco.com

## **DE-STA-CO South America**

Tel: 0800-124070

samerica@destaco.com

## **DE-STA-CO Asia**

Tel: +66-2-326-0812

info@destaco.com

[www.destaco.com](http://www.destaco.com)



A **DOVER** COMPANY

**Automation**

**Robohand FERGUSON**

**CAMCO**